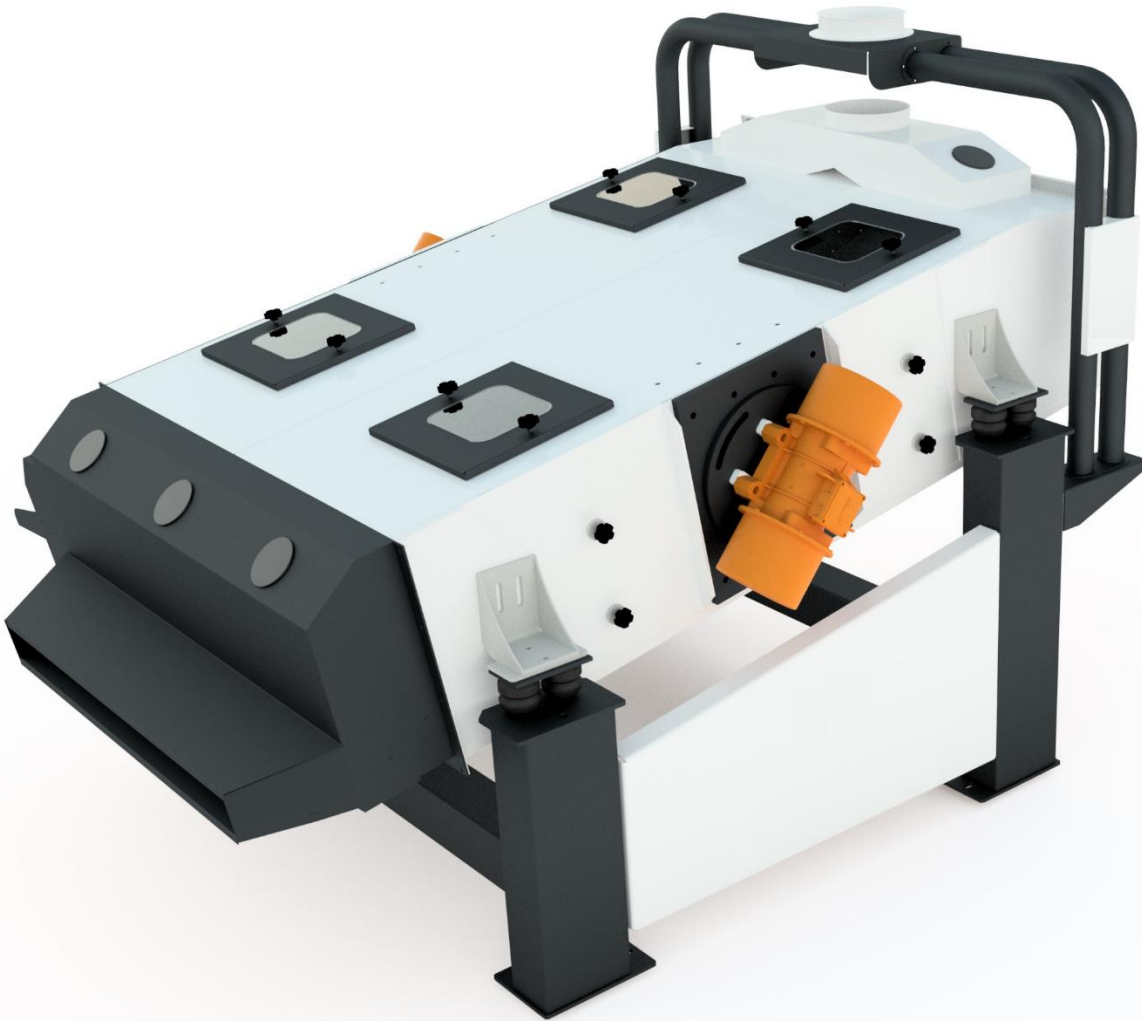


SINCE
2080

Science of Seed Processing



VIBRA PRE-CLEANERS SERIES

VIBRA SERIES SCREEN SEPARATORS VIBRATORY TYPE-FLAT SCREEN

SINCE
2080

SINCE
2080

For over 15 years, Addams has been a leading fixture in the development, design, and production of cleaning and grading machines. Throughout the decades, we have left a significant impact on the technical standard of these systems. Especially when it comes to harvesting crop intake systems, as well as pre-cleaning and central cleaning systems for cereal grains, maize, oilseeds, legumes, malt, rice, coffee, and soybeans, a wide range of users rely on technology made by **Addams**. Our high-performance machines are used mainly in

- Harvest crop intake and receipt facilities, delivery pre-cleaning operations
- Mills and malting plants / Silos and storage warehouses / Seed processing plants

Wide range of applications **ADDAMS VIBRA Separator** is implemented in the separation of Oversize and Undersize admixtures from seed lot in...

- **Grain:** wheat, durum, corn/maize, rye, soybean, oat, buckwheat, spelt, millet, and rice mills for basic cleaning
- **Pulse:** beans, lentils, chickpeas, pigeon peas, yellow peas, vetch for basic cleaning
- **Spices:** cumin, coriander, mustard, Caraway, black pepper, Clover, and Fennel for basic cleaning
- **Oil Seeds;** sesame, sunflower seed, pumpkin seed, flex, pistachio, rape, and safflower for basic cleaning or in bulk storage systems for pre-cleaning.
- In addition, the machine is also successfully used in animal feed production plants, seed treatment systems, oilseed cleaning installations, and cocoa bean grading systems.
- In addition, it grades a wide variety of products by size.
- Efficient grain cleaning at high throughput rates
- Using a screen separation system, the Separator **VIBRA** separates the grain from coarse impurities such as oversized grains, strings, straw, wood, stones, and pebbles, or clods of earth, plus fine impurities such as sand or broken grains.
- The **VIBRA** achieves high throughputs up to 24 t/h in cleaning applications and 100 t/h in pre-cleaning applications in bulk storage installations.
- As an option, it is possible to install a downstream aspiration channel or air-recycling aspirator to separate low-density particles such as dust, hull particles, or husks and thus to optimize the cleaning result.

Advantages

- Drive by electric vibratory motors for negligible maintenance and highly effective screening.
- Choice of aspiration systems from basic aspiration case to high-performance pneumatic channels, as follows:
- Version "A" - separator with basic aspiration case - for removal of dust.
- Version "B" - blower located below the sieve basket in the separator frame to blow dust from the cleaned product.

Application

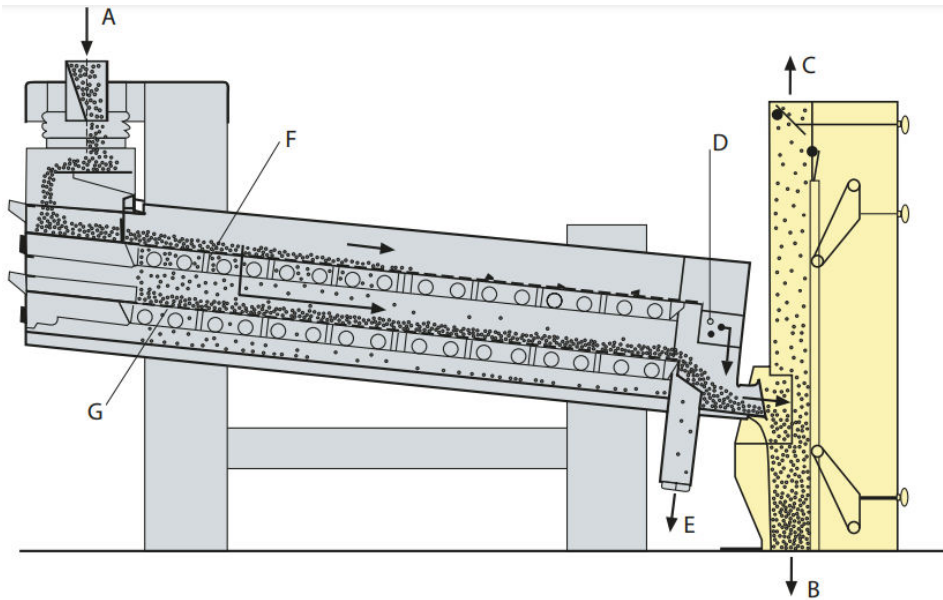
The fact that the stroke, the angle of throw, and the screen inclination of the VIBRA "SEPARATOR" are adjustable allows this separator to be used for a vast variety of applications, for instance:

- cleaning applications in storage elevators (silos), flour mills, seed treatment plants, malhouses, feed mills, etc.
- sizing of various seed products, coffee, etc.
- Classification of by-products.

SINCE
2080

SINCE
2080

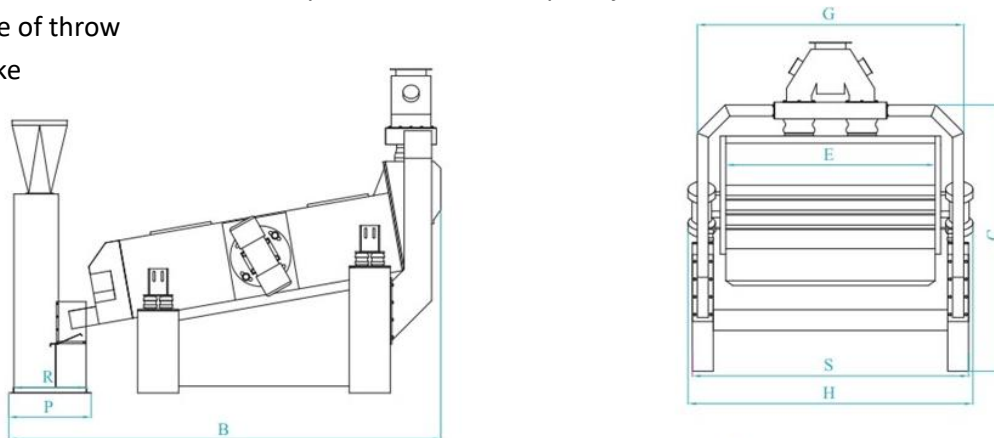
VIBRA PRE-CLEANER FUNCTION DIAGRAM



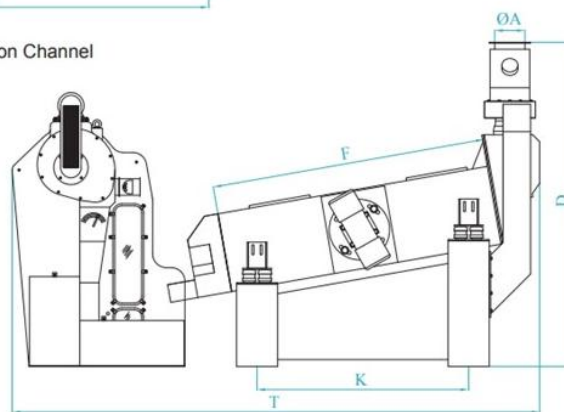
- A) Product Input
- B) Product Output
- C) Aspiration Connection
- D) Oversize Output Chute
- E) Undersize Output Chute
- F) Oversize Screen
- G) Undersize Screen

Features

- Free-swinging sieve with unidirectional screen motion, supported on hollow rubber cylinders
- Drive by means of vibrators located in the centre of gravity of the machine
- Screen inclination pre-set at the works, made to suit the place of application, adjustment to between 2° and 12°
- For special applications: with continuously variable screen slope adjustment, from 2° to 6°
- Adjustable angle of throw
- Adjustable stroke



With Aspiration Channel



With Closed Aspirator

SINCE
2080

VIBRA PRE-CLEANER DATASHEET

Intake capacity (up to 4 % of impurities)

Product	Screens*	V100-150	V100-200	V150-200
Wheat 0,75 t/m ³ 18% H ₂ O	TS: D8 BS: 2,25 x 25	15 t/h	20t/h	30 t/h
Feed Barley 0,65 t/m ³ 18% H ₂ O	TS: D8 BS: 2,25 x 25	12 t/h	16 t/h	25 t/h
Rapeseed 0,6 t/m ³ 14% H ₂ O	TS: D3,5 BS: 1 x 25	11 t/h	14t/h	22 t/h
Maize (corn) 0,75 t/m ³ 15% H ₂ O	TS: D13 BS: 2,25 x 25	15 t/h	20t/h	30 t/h
Maize (corn) 0,75 t/m ³ 35% H ₂ O	TS: D13 BS: ---	7,5t/h	10t/h	15 t/h
Soya Beans 0,75 t/m ³ 18% H ₂ O	TS: D13 BS: 2,25 x 25	16 t/h	20t/h	32 t/h
Paddy 0,55 t/m ³ 18% H ₂ O	TS: 5,5 x 25 BS: 1,4 x 25	5,5t/h	7t/h	11 t/h
White Rice 075 t/m ³ 12% H ₂ O	TS: 5,0 x 25 BS: 1,25 x 25	5 t/h	6 t/h	10 t/h

*PS: TOP Screen; MS: BOTTOM Screen

	Unit	VIBRA 100-150	VIBRA 100-200	VIBRA 150-200
Working Width	mm	1.000	1.000	1.500
Screen Area				
Total		3	4	6
Top screen area	m ²	1,5	2	3
Bottom screen area		1,5	2	3
Connected load				
Screen box	kW	1,0	1,5	1,5
Aspiration connection				
Exhaust air (at 90 mm WC)	m ³ /min			
Screen box (at 30 mm WC)		140 12	195 12	260 12
Total weight	Kg	ca. 540	ca. 550	ca. 750
Dimensions Length B				
Width H	mm	2.470 1.590	2.980 1.590	3.150 2.010
Height D		1.760	1.760	2.360

The values are non-binding, technical changes reserved. In cramped mounting conditions, the dimensions of the universal aspirators should be reviewed again.