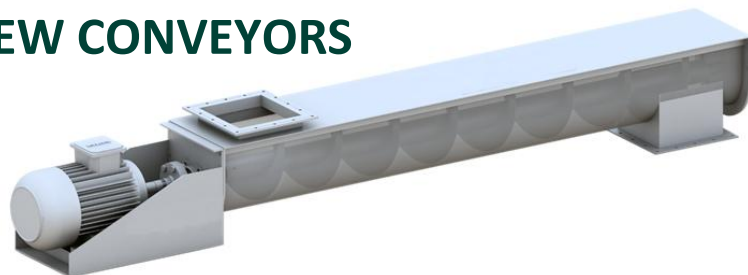


SINCE
2080

ADDAMS SCREW CONVEYORS



General

- Brand** ADDAMS
Model Screw Conveyors of 150 / 200 / 250 / 300 Series
Types Tubular & Trough Type
Application Conveying of Cereal grains and other seeds.

The screw conveyors are of modular construction consisting of inlet and outlet sections, trough section with screw flight and the drive assembly. All types can be delivered in a painted, hot dipped galvanized or stainless-steel version. Equipment and accessories are manufactured for straightforward conveyors or complete systems for large corporate projects, all to meet specific customer requirements. The screw conveyors can be delivered for transport, extraction and dosing.

FEATURES

- INLET
- SPEED GUARD (OPTIONAL) AND EARTHING
- STAND OFF BEARINGS
- INTERMEDIATE BEARING
- OPENABLE COVER (OPTION)
- SAFETY FLAP AND INSPECTION DOOR
- THE DRIVE
- OUTLET
- OPENABLE BOTTOM (OPTION)
- FLIGHT OPTIONS

DRIVE SYSTEM

- Parallel shaft or/and helical gear motor, hollow shaft
- Gear motor mounted on right- or left-hand side as specified

CONTROLLERS

- Overflow sensing
- Rotation sensing (optional)
- Bearing heat sensing (optional)
- Explosion relief (optional)

ACCESSORIES & FEATURES

- Multiple inlets
- Multiple outlets
- Prepared for earthing as standard
- Flights with Hard ox
- Shaft free flights
- ATEX zone approved parts
- PEHD wear plate (f. trough screw conveyors)

Technical data		
Maximum capacity	SC-150	13 m ³
	SC-200	26 m ³
	SC-250	35 m ³
	SC-300	53 m ³
Maximum bulk density	850 kg/m ³	
Drive motor size	According to application	
Shaft Speed	Ranging from 80 to 210	
Sound pressure level	75 to 85 dB(A)	
Maximum length and angle of slope	Depends on the material properties and the length and angle of the conveyor	
Operating conditions	Indoor and outdoor -15°C to +40°C ambient	
Materials		
Casing	Standard	Pre-galvanized steel
	Optional	Hot-dip galvanized steel
		Stainless steel
		Painted steel

Compliance		
Atex	Standard	Non-zone inside non-zone outside
	Optional	Zone 22 or 21 inside Zone 22 or 21 outside

NOTE: All capacities in the above table are based on the handling of dry and cleaned wheat.

SINCE
2080