

SINCE  
2080

# ADDAMS EASY DUMP P ELEVATOR

<b>Brand</b>	<b>ADDAMS</b>
<b>Designation</b>	Easy Dump P Bucket Elevator
<b>Model</b>	EDPBE Series
<b>Application</b>	The Perfect Elevator for tight spaces and gentle conveying tasks.

ADDAMS Elevators are typical of the innovative nature valued by Saat Technologie. By taking our proven, reliable design and upgrading its performance, ADDAM Shas created the new standard for gentle-handling elevators. With these elevators ADDAMSs strives to provide our customers with a high-performance piece of equipment with an economical price tag.

- Gentle discharge of product
- Chain and bucket design
- Boot clean-out doors
- Bolted legging (saves on freight)
- Stainless steel contacts available
- High-capacity units
- Shaft-mounted gear reducer with backstop
- Rest and service platforms available
- Manual and pneumatic switch valve options

## FEATURES & OPTIONS

### Bolted Legging

The legging of our elevators can be shipped disassembled, thereby reducing freight costs.

### Positive Clean Out Boot

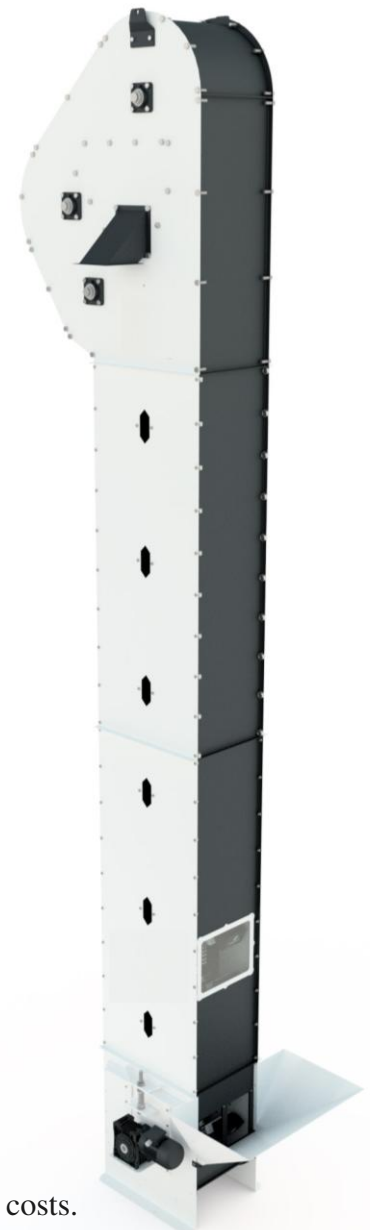
The boot is tapered to a drawer action assembly which when opened, completely empties the boot. Built in boot clearance above the floor enables quicker, more effective clean-outs and maintains proper sanitation.

### "U" Series

The "U" Series Easy Dump was designed with height restrictions and spouting limitations in mind. The ability to feed and discharge on the same side allows you to achieve spouting configurations that are virtually impossible by traditional elevators.

### "D" Series

The "D" Series Easy Dump is the ideal elevator for lifting two different products in limited spaces. This configuration gives you the ability to elevate two different product types without contamination. The two separate product in-feeds, bucket lanes and discharge spouts enable the "D" to act as two elevators.

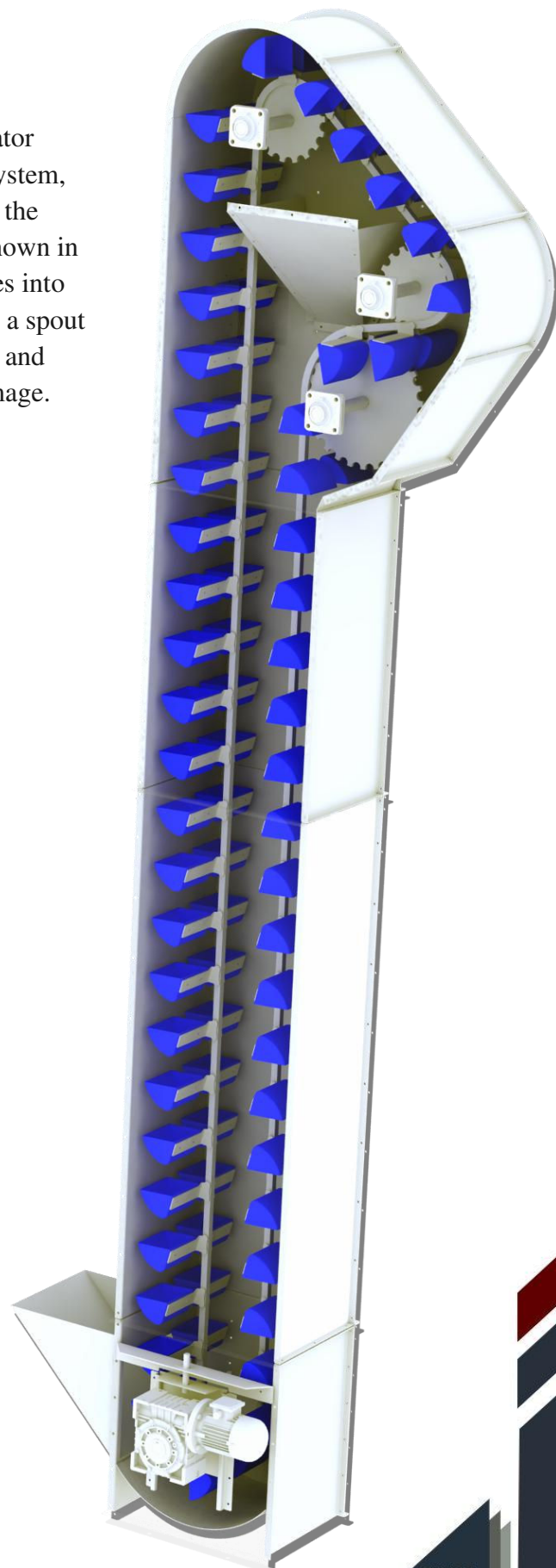


SINCE  
2080

SINCE  
2080

### Easy Operation

The principals of operation for an ADDAMS Easy Dump P Elevator are very simple, straightforward and effective. From a spouting system, the product is transferred into the buckets. The buckets travel up the legging until they are pulled around the first set of sprockets as shown in the illustration. The buckets are gently tilted and product dispenses into the discharge hopper. From this hopper the product feeds through a spout to your designated destination. The buckets continue in this cycle and provide a continuous, smooth flow of product with very little damage.



### Model Specifications

Model	Bucket Size	Cubic m <sup>3</sup> /h Capacity	Capacity tph @ 350m <sup>3</sup>	Capacity tph @ 800m <sup>3</sup>
EDPBE -S125	125	7,5 m <sup>3</sup> /h	3,4 tph	6.0 tph
EDPBE -D125	125x2	15 m <sup>3</sup> /h	6,8 tph	12.0 tph
EDPBE -S150	150	10 m <sup>3</sup> /h	4,5 tph	8.0 tph
EDPBE -D150	150x2	20 m <sup>3</sup> /h	9.0 tph	16.0 tph
EDPBE -S180	180	12,5 m <sup>3</sup> /h	5,6 tph	10.0 tph
EDPBE -D180	180x2	25 m <sup>3</sup> /h	11,3 tph	20.0 tph
EDPBE -S200	200	15 m <sup>3</sup> /h	6,8 tph	12.0 tph
EDPBE -D200	200x2	30 m <sup>3</sup> /h	13,5 tph	24.0 tph
EDPBE -S250	250	18.75 m <sup>3</sup> /h	8.45 tph	15.0 tph
EDPBE -D250	250x2	37,5 m <sup>3</sup> /h	16,9 tph	30.0 tph
EDPBE -S300	300	22,5 m <sup>3</sup> /h	10,1 tph	18.0 tph
EDPBE -D300	300x2	45 m <sup>3</sup> /h	20,3 tph	36.0 tph

SINCE  
2080