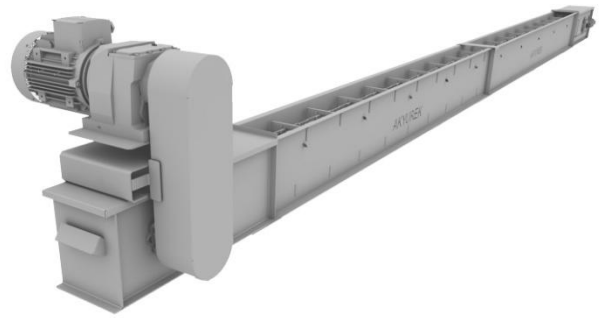


SINCE  
2080

# ADDAMS CHAIN CONVEYOR



- Brand** ADDAMS  
**Model** Chain Conveyors of 400 / 500 / 600 Series  
**Belt Speed** up to 30 meters (100 feet)/minute  
**Application** Conveying of Cereal grains and other seeds.

ADDAMS type CC chain conveyor is designed for moving dry bulk materials, such as grains and grain-like products, but can successfully be used to transport other materials, such as granulate, shavings etc. ADDAMS will assist with consulting.

The conveyor can be arranged with several slide gates for material outlets. The conveyor can be configured for reversible operation. Curved back plate used with return buckets can ensure that the material does not accumulate at the end of the conveyor. Intermediate sections with double bottom and raised cover can be equipped with capacity regulation.

## FEATURES

- Single bottom casing with return rollers or double bottom casing
- Dual-side or top loading
- Single strand conveyor chain, pins-and-bush assembly
- Welded flights with bolted scraper flaps
- Manual chain tensioning at tail end
- Wear plates on bottom

## DRIVE SYSTEM

- Parallel shaft or/and helical gear motor, hollow shaft
- Gear motor mounted on right- or left-hand side as specified

## CONTROLLERS

- Overflow sensing
- Rotation sensing (optional)
- Bearing heat sensing (optional)
- Explosion relief (optional); data sheet 50

## ACCESSORIES

- Outlet for Q-pipe system
- Top covers for inlet sections
- Slide gates; data sheet: Slide Gate Type RL/RS/RM
- Return buckets for chain
- Inspection windows
- Wear plates along lower sides
- Sun cover for gear motor
- Support system; data sheet: Chain Conveyor Support System
- Centre drive
- Air cleaning

## Technical data

Maximum capacity	CC-30	72 m <sup>3</sup> /h
	CC-50	119 m <sup>3</sup> /h
	CC-70	161 m <sup>3</sup> /h
	CC-80	212 m <sup>3</sup> /h
Maximum bulk density	850 kg/m <sup>3</sup>	
Drive motor size	According to application	
Chain speed	Up to 0.60 m/s	
Sound pressure level	75 to 85 dB(A)	
Maximum length and angle of slope	Depends on the material properties and the length and angle of the conveyor	
Operating conditions	Indoor and outdoor -15°C to +40°C ambient	

## Materials

Casing	Standard	Pre-galvanized steel	
	Optional	Hot-dip galvanized steel Stainless steel Painted steel	
Wear plates, bottom	PE-UHMW, antistatic, 10 mm		
Wear plates, sides	Optional	Hard ox <sup>®</sup> steel, 4 mm	
Chain	Steel, oil-coated		
Rollers Standard	Optional	RL-3, -	5Nylon
		RL-7Nylon	(ø22 bush)
		RL-8Steel, oil coated	
		RL-3, -5, -	7Steel, oil coated
Scraper flaps	PE-UHMW, antistatic		
<b>Compliance</b>			
Atex	Standard	Non-zone inside Non-zone outside	
	Optional	Zone 22 or 21 inside Zone 22 or 21 outside	

NOTE: All capacities in the above table are based on the handling of dry and cleaned wheat

SINCE  
2080