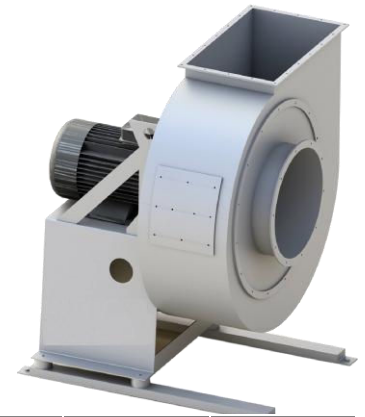


SINCE
 2080

ADDAMS CENTRIFUGAL FANS

General

Brand	ADDAMS
Designation	Centrifugal fans
Model	CF Series
Application:	Moving air within a duct in large-volume dust collection systems



The ADDAMS centrifugal fan type CF is a Low-pressure fan featuring backward-curved steel blades, manufactured from a steel plate. The impeller is self-cleaning and dynamically balanced. The spiral housing is made of a welded steel plate.

The fans are supplied with a direct-coupled 1500 rpm flange motor. The larger models, CF100, 110, and 120, are provided with motor frames and built-in varifan on the suction side.

FAN CATEGORY

Installation type	Ducted inlet and ducted outlet
Suitability for pressure	Low pressure
Casing construction	Intermittently welded with bolted on side-plates
Impeller type	Backward-inclined
Drive arrangement	Direct drive
Inlet and outlet conditions	Inlet and outlet openings directly by the casing
Method of fan control	Damper control Vane control (optional)
Outlet position	LG0-LG315; RD0-RD315
Motor position	Direct-line

DIMENSIONS	CF-80	CF-85	CF-90
Impeller diameter	665 mm	662 mm	671 mm
Overall length	1229 mm	1 229 mm	1229 mm
Overall height	1097 mm	1 097 mm	1 097 mm
Overall width	650 mm	796 mm	1 012 mm

WEIGHT

Weight	200 kg	210 kg	270 kg
--------	--------	--------	--------

OPERATING SPEED

Impeller rotation	1,500 rpm
-------------------	-----------

ELECTRICAL RATINGS

Motor output	5,5 kW	7.5 kW	11 kW
Motor voltage	400 V		
Motor frequency	50 Hz		

NOISE

Sound pressure level	91 dB(A)	93 dB(A)	96 dB(A)
----------------------	----------	----------	----------

COMPLIANCE

EU machinery legislation	Yes
EU ATEX legislation	No
EU food contact legislation	No

ENVIRONMENTAL CONDITIONS

Environment	Indoors
Temperature	From -20°C to +40°C
Altitude	Up to 1,000 m
Relative humidity	Maximum 80%, no dew point

SURFACE PROTECTION

Casing	Paint (corrosivity category C2; low durability)
--------	---

LIFETIME

Intended life limit	20 years	2080
---------------------	----------	------