

SINCE  
2080

## ADDAMS Reverse Pulse Jet Filter

Brand	ADDAMS
Designation:	Reverse Pulse Jet Filter
Model	JF Series
Application	Separation of Dust from Aspirated Seed Cleaning Air.

Pressure-shock-resistant filters are used in almost every sector and branch of industry. In light of constantly increasing environmental awareness and more stringent legal regulations, dust removal has become an absolute must in nearly all companies. Jet Filters STJF are particularly suited for use in reception and storage plants for grain and other bulk materials, as well as in the biomass, feed, and food industries.

### Effective dust removal and compact design

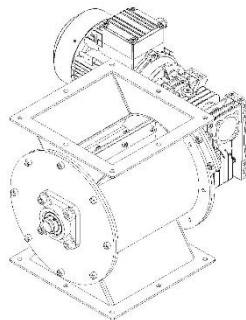
- \*More effective dust removal thanks to pre-separation of heavy particles via cyclone inlet
- \*The Jet Filter AKJF boasts a low space requirement and low investment costs thanks to the compact design and the high filter surface load

### Effective cleaning of the filter bags

- \*Time-controlled and/or differential pressure-controlled cleaning of the filter bags results in greater flexibility for setting the cleaning operation.
- \*Flushing the filter bags ensures subsequent operational reliability.

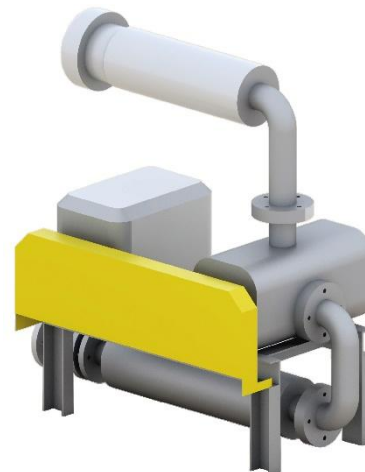
### Pressure-shock resistant

- \*The pressure-shock-resistant design with pressure release means that the Jet Filters are also suitable for combustible or explosive dust.
- \*The Jet Filters, therefore, satisfy even the most stringent safety requirements.

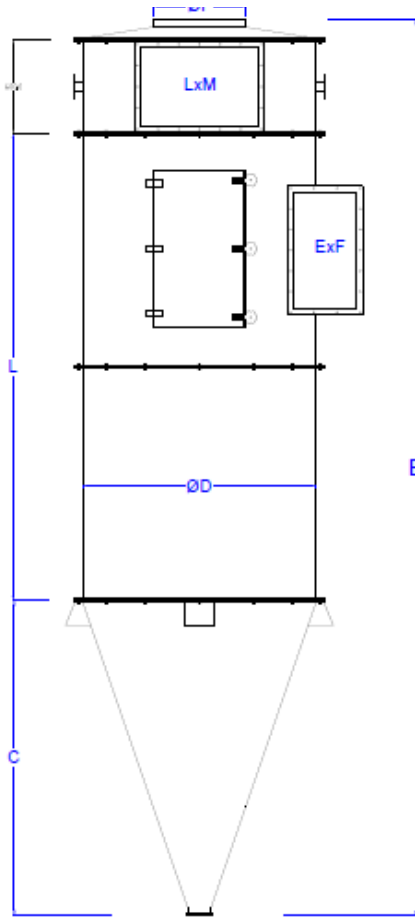


### Auxiliary Equipment

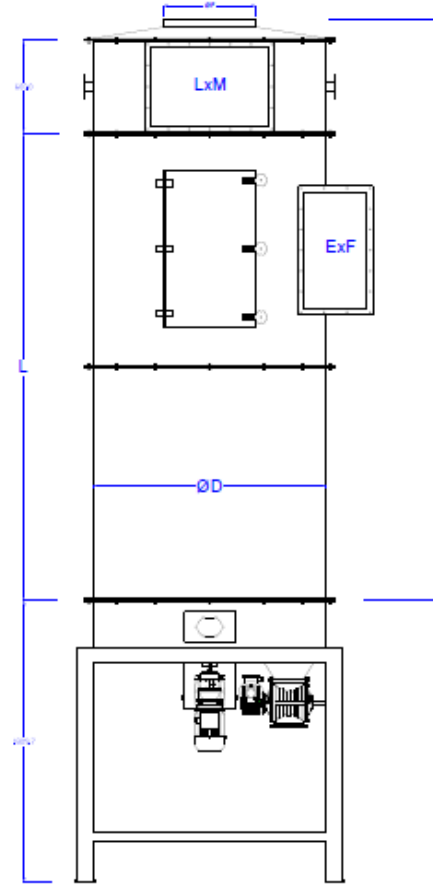
- Air Blower
- Air Lock
- Base Frame

SINCE  
2080

**Conical Bottom Model**



**Flat Bottom Model**



Model Type	JF-16			JF-28			JF-40			JF-56			JF-80			JF-96			JF-104					
	1800	2400	3000	1800	2400	3000	1800	2400	3000	1800	2400	3000	1800	2400	3000	1800	2400	3000	1800	2400	3000			
Filter Bag Length	1800	2400	3000	1800	2400	3000	1800	2400	3000	1800	2400	3000	1800	2400	3000	1800	2400	3000	1800	2400	3000	1800	2400	3000
Filter Surface m2	11	14	18	19	25	31	27	36	45	38	50	63	54	72	90	65	86	108	70	93	117			
A	2600	3200	3800	2600	3200	3800	2600	3200	3800	2600	3200	3800	2600	3200	3800	2600	3200	3800	2600	3200	3800	2600	3200	3800
B	3790	4390	4990	4000	4600	5200	4260	4860	5460	4470	5070	5670	4910	5510	6110	5230	5830	6430	5230	5830	6430	5230	5830	6430
C	1190			1400			1666			1878			2300			2610			2610					
ØD	950			1150			1350			1500			1850			2100			2100					
E x F	250 x 400			270 x 500			300 x 650			400 x 750			500 x 800			550 x 850			550 x 850					
L x M	400 x 400			350 x 450			450 x 450			500 x 750			500 x 800			500 x 900			500 x 900					
ØF	400			450			500			550			700			750			750					
Weight	485	545	605	585	655	725	890	995	1100	1115	1240	1365	1615	1790	1965	2120	2450	2750	2120	2450	2750			
Volume	4,8	6,03	6,65	6,45	8	8,77	9,05	11,06	12,07	12,08	14,62	15,89	21,23	25,13	27,07	24,64	29,12	31,36	24,64	29,12	31,36			